



MONTHLY MEMBERSHIP PROGRESS REPORT

District 8 I

Results as of: 2/17/2014 11:17:44AM

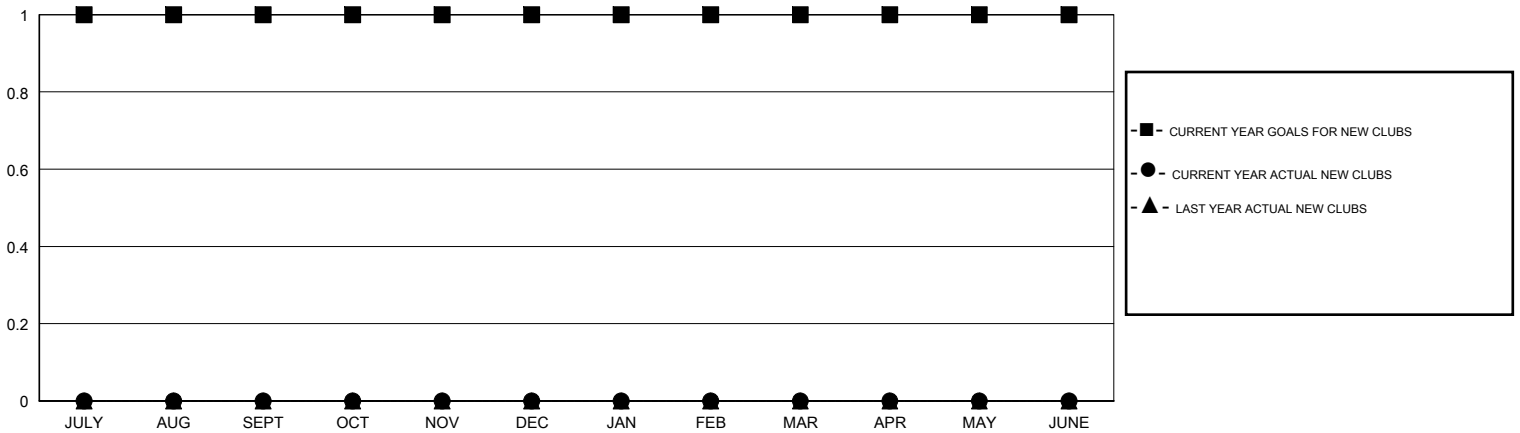
GMT: HAL GRIFFIN

LOCATION LOUISIANA

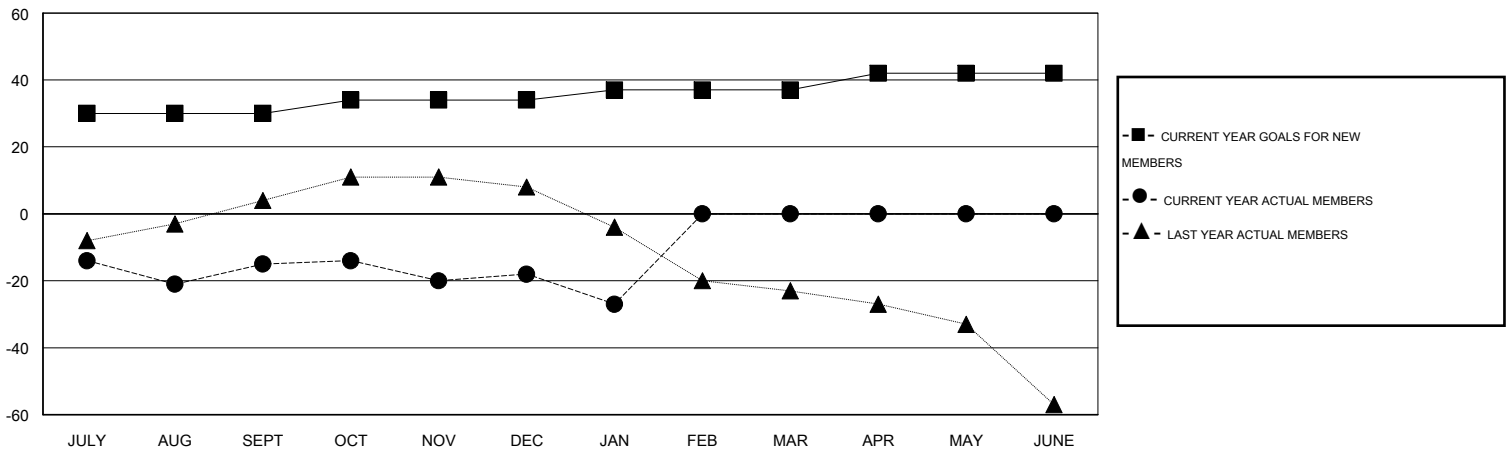
GMT CA 1

Clubs					Members				
RESULTS FOR 2013-2014					RESULTS FOR 2013-2014				
QUARTER	NEW CLUB GOAL	ACTUAL NEW CLUBS	ACTUAL DROPPED CLUBS	ACTUAL NET GAIN/LOSS	QUARTER	NEW MEMBER GOAL	ACTUAL NEW MEMBERS	ACTUAL DROPPED MEMBERS	ACTUAL NET GAIN/LOSS
JULY/AUG/SEPT	1	0	1	-1	JULY/AUG/SEPT	30	19	34	-15
OCT/NOV/DEC	0	0	0	0	OCT/NOV/DEC	4	15	18	-3
JAN/FEB/MAR	0	0	0	0	JAN/FEB/MAR	3	1	10	-9
APR/MAY/JUNE	0	0	0	0	APR/MAY/JUNE	5	0	0	0

GOALS AND ACTUAL NEW CLUBS CUMULATIVE



GOALS AND ACTUAL MEMBERS CUMULATIVE



DROPPED CLUBS: 1	12 CLUBS OF 27 ADDED 1 OR MORE NEW MEMBERS	<u>GENDER DISTRIBUTION</u>	
<u>DROPPED MEMBERS</u>		MALE	586 (79.84%)
DECEASED	CLICK HERE FOR HEALTH ASSESSMENT DATA	FEMALE	148 (20.16%)
CLUB CANCELLED		FAMILY UNIT MEMBERS	62
OTHER		HEAD OF HOUSEHOLD	31
TOTAL		NON-HEAD OF HOUSEHOLD	31